



WHAT WE DO :

MOONLAB TECHNOLOGIES PVT LTD is an importer, distributor & solution provider for RF products based in New Delhi. We deal in products from **MikroTik, Ubiquiti, Cambium networks** , **Cisco** & other leading brands from India and around the world.

Our aim is to provide latest technology and services to our clients at competitive prices with time bound precision.

Mission Statement:

To introduce and work with the best products and latest technology , cause no unnecessary harm, use business to inspire and implement solutions for better connectivity .



CCR1072-1G-8S+

1U rackmount, 1x Gigabit Ethernet, 8xSFP+ cages, LCD, 72 cores x 1GHz CPU, 16GB RAM, up to 120 million packets per second, 80Gbps throughput, RouterOS L6.

CCR1036-8G-2S+EM

1U rackmount, 8x Gigabit Ethernet, 2xSFP+ cages, LCD, 36 cores x 1.2GHz CPU, 16GB RAM, 41.5mpps fastpath, Up to 28Gbit/s throughput, RouterOS L6

CCR1036-12G-4S-EM

1U rackmount, 12x Gigabit Ethernet, 4xSFP cages, LCD, 36 cores x 1.2GHz CPU, 16GB RAM, 24 mppsfastpath, Up to 16Gbit/s throughput, RouterOS L6

CCR1009-7G-1C-1S+

1U rackmount, 7x Gigabit Ethernet, 1x Combo port (SFP or Gigabit Ethernet), 1xSFP+ cage, 9 cores x 1.2GHz CPU, 2GB RAM, LCD panel, Dual Power supplies, SmartCard slot, RouterOS L6

RB1100AHx4

Powerful 1U rackmount router with 13x Gigabit Ethernet ports
Introducing RB1100AHx4, 13x Gigabit Ethernet ports Router, powered by Annapurna Alpine AL21400 CPU with four Cortex A15 cores, clocked at 1.4GHz each, for a maximum throughput of up to 7.5Gbit. The device supports IPsec hardware acceleration (up to 2.2Gbps with AES128).

RB3011UiAS-RM

1U rackmount, 10xGigabit Ethernet, SFP, USB 3.0, LCD, PoE out on port 10, 2x1.4GHz CPU, 1GB RAM, RouterOS L5





Mantbox 15S

The mANTBox is based on our new mANT sector antennas, but also has a wireless router built right in



MikroTik Netbox 5

The NetBox is a dual chain outdoor client device with RP-SMA connectors for antennas, and a cable hood for protection against moisture.



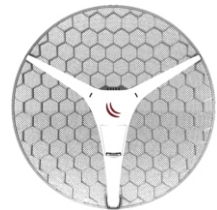
MikroTik LHG 2

The Light Head Grid (LHG) is a compact and light 2.4 GHz 802.11b/g/n wireless device with an integrated dual polarization 18 dBi grid antenna at a revolutionary price.



MikroTik LHG XL 2

The Light Head Grid (LHG) is a compact and light wireless device with an integrated dual polarisation grid antenna at a revolutionary price. It is perfect for point to point links or for use as a CPE.



MikroTik RBLHG-5HPnD

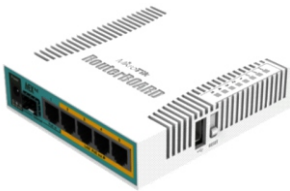
The LHG is a compact and light 5GHz 802.11 a/n wireless device with an integrated dual polarization 24.5 dBi grid antenna.





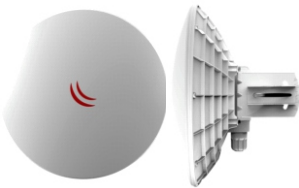
MikroTik Hex Lite

hEX lite is a small five port ethernet router in a nice plastic case.



MikroTik HEX POE

hEX PoE is a five port Gigabit Ethernet router for locations where wireless connectivity is not required.



MikroTik Dyna Dish5

The DynaDish 5 is a new 802.11ac outdoor device with an integrated 25dBi antenna.



MikroTik Routerboard SXT SQ Lite5

The SXTsq Lite5 is a compact and lightweight outdoor wireless device with an integrated antenna.



MikroTik RBLHGG-60adkit

The Wireless Wire Dish is a ground breaking solution which offers Fiber speed and quality on distances up to 1500 m for a fraction of the price!



NETMETAL 5

Dual chain 5GHz integrated 802.11a/n/ac AP/Backbone/CPE with an additional miniPCI-e slot, 2xRPSMA connectors, Gigabit Ethernet, waterproof metal enclosure



SXT LTE KIT

SXT 2G/3G/4G/LTE CPE, 9dBi 60 degree antenna, 2x Ethernet ports (one with PoE out), two SIM, 650MHz CPU, 64MB RAM, enclosure, PoE and PSU (RouterOS L3), International bands



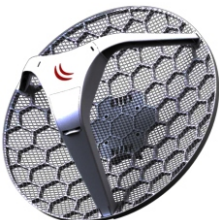
OmniTIK 5 PoE ac

7.5dBi Integrated AP, 5GHz Dual chain with 802.11ac support, 5x Gigabit Ethernet ports with PoE-out OmniTIK 5 PoE ac features five Gigabit Ethernet ports and support for 802.11ac.



LHG XL 5 ac

Dual chain Long Range 27dBi 5GHz CPE/Point-to-Point Integrated Antenna with AC support and Gigabit Ethernet



RBLHG-5nD

The LHG 5 is a compact and light 5GHz 802.11 a/n wireless device with an integrated dual polarization 24.5 dBi grid antenna at a revolutionary price.



MANT 19S

Dual-polarization 5Ghz 19dBi 120 degree beamwidth antenna with two RP-SMA connectors

mANTBox 19s

5GHz 120 degree 19dBi dual polarization sector Integrated antenna with 720Mhz CPU, 128MB RAM, SFP, PSU and PoE also has a wireless router built right in. Powered by the RB921 device, the mANTBox comes ready to use with everything included.



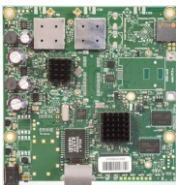
MikroTik RouterBoard RB450

The RB450 is a five port ethernet router with serial port and powerjack for OEM applications.



MikroTik RouterBOARD 911G-5HPnD

A small CPE type OEM router with an integrated 5 GHz dual chain wireless and Gigabit Ethernet.



MikroTik RB911G-5HPacD

A small CPE type OEM router with an integrated 5 GHz 802.11a/n/ac dual chain wireless and Gigabit Ethernet.



AF5U

5 GHz Full Duplex Point-to-point Gigabit Radio. The airFibre is purpose-built for outdoor, Point-to-Point bridging and carrier-class network backhauls.



Rocket M2/M5

airMAX® BaseStation Featuring enhanced radio performance and mix-and-match industrial design, the Rocket M is ideal for deployment in Point-to-Point bridging or Point-to-MultiPoint applications.



PBE-5AC-620

High-Performance airMAX® ac Bridge. Incorporating a dish reflector design with proprietary airMAX® ac technology, the Power Beam® AC is ideal for CPE deployments requiring maximum performance.



RD-5G30

Pair the RocketDish™ with a Rocket M Base Station for Point-to-Point bridging and network backhauls



RD-5G31-AC

The RocketDish™ ac Antennas feature significant advances in scalability, noise isolation, and beam performances to compliment the Rocket™5ac radios for Point-to-Point bridging & backhauls.





AM-5AC21-60

The airMAX® ac Sector Antennas feature significant advances in scalability, noise isolation & beam performances to complement the Rocket™5ac radios in Point-to-MultiPoint networks.

AM-5G19-120

Pair the airMAX® Sector Antenna with a Rocket™MBaseStation for sector coverage in Point-to-MultiPoint networks.

AMO-5G13

Pair the airMAX® Omni Antenna with a Rocket™MBaseStation for 360° coverage in Point-to-MultiPoint networks.

UF-OLT

GPON Optical Line Terminal. Configuring a fibre network just became as easy as setting up a smartphone. Say bye to command lines, manuals, & paid support licenses. Ufibre OLT – a fibre solution that anyone can deploy.



Cisco Catalyst 9400 Series Switches

The Catalyst 9400 Series is the next generation of the industry's most widely deployed enterprise switching platform, and it was recently recognized as CRN's 2017 Overall Network Product of the Year



Cisco Catalyst 9300 Series Switches

The Catalyst 9300 Series is the next generation of the industry's most widely deployed stackable switching platform, and it was recently recognized as CRN's 2017 Overall Network Product of the Year.



Industrial Ethernet 5000 Series Switches

The IE 5000 Series is built to withstand extreme environments while adhering to overall IT network design, compliance, and performance requirements



Cisco Catalyst Digital Building Series Switches

Our Catalyst Digital Building plenum-rated UPOE fan-less switches are designed for smart buildings and optimized for low-voltage PoE. Combine lighting, air conditioning, security systems, and more on one IP network with seamless security and easy installation and management.



Cisco Catalyst 9500 Series Switches

The Cisco Catalyst 9500 Series is the first 100/40-Gbps switch purpose built for the enterprise campus. It was recently recognized as CRN's 2017 Overall Network Product of the Year.





Cisco 900 Series Industrial Routers

Cisco 900 Series Industrial Routers offer transparent integration with ecosystem partners' solutions. They deliver versatile smart city applications, such as environment monitoring, smart parking, smart metering, smart street lighting, asset tracking, and more.



Cisco 800 Series Routers

Ready for Cisco Intelligent WAN
Switch and router in one device
Run multiple applications simultaneously
High-performance, high-application experience
Support for 802.11 a/b/g/n and 4G LTE



Cisco Aironet 1570 Series

The Cisco Aironet 1570 Series is currently the industry's highest-performing outdoor access point. It is the only one to date that supports 802.11 ac Wi-Fi with 4x4 MIMO true beamforming smart antenna technology with three spatial streams.



Cisco 8540 Wireless Controller

As a component of the Cisco Software-Defined Access Solution, the 8540 provides real-time communications between Cisco Aironet access points, Cisco Prime Infrastructure, and the Cisco Mobility Services Engine.



ePMP 2000 System

The ePMP 2000 system is more than the sum of its parts, giving network operators and their customers the benefit of highly scalable, reliable performance at a whole new level of interference tolerance.

ePMP 2000 Access Point with Intelligent Filtering

The ePMP 2000 Access Point is the core of the ePMP 2000 system, bringing a whole new level of interference tolerant performance to real-world networks at an affordable price.

ePMP Sector Antenna

The ePMP Sector Antenna also features excellent null fill, to allow subscribers at all ranges from the access point to connect with excellent performance.

Force 200 5 GHz

The ePMP Force 200 adds a subscriber module and point-to-point (PTP) radio to ePMP's 5 GHz line of products, designed to operate in high interference environments and provide superior throughput of over 200 Mbps of real user data.

PTP 670

PTP 670 systems provide 4.9 to 6.05 GHz, multi-band flexibility in a single radio and operate in channel sizes from 5 to 45 MHz.





Cambium Networks



ePMP 3000

The ePMP 3000™ is the third generation access point (AP) that carries on the interference tolerance mechanisms from ePMP 2000 but adds the power of Multi-User MIMO (MU-MIMO)



PTP 700 - Wireless Broadband Solution

PTP 700 is a Point-to-Point wireless broadband solution for mission-critical communications in government, industrial and public safety spaces.



PTP 450i

The 450i boasts triple the power and range of a 450 product, along with ruggedization to withstand industrial and public safety environments. Available as PMP or PTP.



ePMP 3000 Sector Antenna

The ePMP 3000 4X4 sector antenna encompasses all the key differentiations of the Cambium Antenna line and adds 4X4 Multi User MIMO Capability.

Note/Reminders







MoonLab

Moonlab Technologies Pvt Ltd.

📍 Regd. Office: 2/27, W.H.S, Kirti Nagar, New Delhi - 110015 India

☎ +91-11-25464962, 25438512

✉ sales@moonlab.in 🌐 www.moonlab.in

CIN: U51909DL2018PTC339578